



# CANDINO

## GROUP OF INDUSTRIES

The Ultimate Choice of Quality Gloves Buyers

[www.candinogroup.com](http://www.candinogroup.com)



**Muhammad Fiaz Bhatti**  
C.E.O

## WHO ARE WE!

We are reliable and professional Manufacturer of Leather Working, Mechanics, PU Leather & Winter Gloves based in Sialkot-Pakistan since 1985. Our knowledge and expertise of 30 years with Highly Qualified and Experienced Supervision makes us trusted leader with in our industry. We have our own Tannery, Production and Packing Department together under one roof, which provides us competitive advantage in terms of maintaining Quality, Low (internal) Transportation costs and providing competitive prices with swift delivery solutions.

## WHY US!

### Our Products & Materials:

We are qualified to affix CE-Marking on our famous products and assure you that when you are buying a pair of gloves from our company then you are buying a carefully inspected and Harmful Substances-Free product. Our raw Materials including leather are REACH compliance and we use to test each leather batch for Chrome VI through International Accredited Laboratory and randomly test our materials for REACH test as well.



**Afzaal Bhatti**  
Managing Director

### Quality & Assurance:

We are an ISO 9001:2015 & ISO 14001:2015 certified company and strictly maintaining it. Our whole production runs through ERP (Enterprise Resource Planning) system through which we can easily trace exact raw materials batch used against each pair. We ensure your comfort and safety as possible as we can in your working environment.

### Production Capacity:

**With 300 Sewing Machines, 30 Hydraulic Cutting Presses, 500 Employees, 1 Silicone Unit, 1 Screen Printing Unit** and Edge of having own tannery makes our capacity to produce 3.5 to 4 Million Pairs Annually.

### Customized Products:

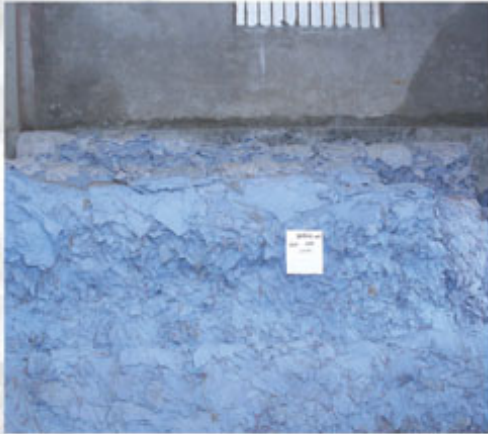
We have our own Research & Development Department who is always keen in checking every latest invention in the field of gloves. We can also make customized products on your request or you can also send us your own design in order for us to send you free counter-samples. We can also place your company logo on manufactured gloves.

## CERTIFICATIONS:





# PRODUCTION VIEW





# ASSEMBLY GLOVES PAGE 06 TO 15



CG-101



CG-101B CG-102 CG-103 CG-103B CG-104 CG-105 CG-106 CG-107 CG-107B



CG-107D CG-108U CG-108UB CG-109H CG-110 CG-111 CG-112 CG-113W CG-114 CG-115 CG-115B



CG-116 CG-117 CG-118 CG-119 CG-120W CG-121 CG-122 CG-123 CG-124 CG-125W CG-126 CG-127



CG-201

# DRIVER GLOVES PAGE 16 TO 19



CG-202 CG-203H CG-204 CG-205 CG-206 CG-207 CG-208 CG-209 CG-210



CG-210B CG-210C CG-210D CG-210E CG-211 CG-212H CG-213H CG-214H CG-215 CG-216 CG-217

# CANADIAN GLOVES PAGE 20 TO 21



CG-302 CG-303 CG-304 CG-305W CG-306W CG-307W CG-308W CG-309W



CG-301



CG-401

# WELDING GLOVES PAGE 22 TO 23



CG-402 CG-403 CG-404 CG-405 CG-405B CG-406 CG-407



# BASIC SYNTHETIC GLOVES

PAGE 24



CG-501



CG-502



CG-503



CG-504



CG-505



CG-506



CG-602

# MECHANIC LEATHER GLOVES

PAGE 25 TO 27



CG-601U



CG-603U



CG-604U



CG-605



CG-606U



CG-607U



CG-608



CG-609



CG-610U



CG-611U



CG-612U

# GENERAL PURPOSE

PAGE 28 TO 31



CG-801



CG-701



CG-703



CG-704



CG-705



CG-706



CG-702U

# GRIPPER GLOVES

PAGE 32 TO 33



CG-802W



CG-803U



CG-804



CG-805U

# IMPACT PROTECTION

PAGE 34 TO 35



CG-901



CG-902



CG-903



CG-904



CG-905



CG-906



CG-907



CG-806



CG-807



CG-808

# PU LEATHER GLOVES

PAGE 36 TO 37



CG-1001U



CG-1002U



CG-1003U



CG-1004W



CG-1005



CG-1006



CG-1007



CG-1008



CG-1009

# CUT RESISTENT GLOVES

PAGE 38 TO 39



CG-1101



CG-1102



CG-1103



CG-1104



CG-1105



# ASSEMBLY GLOVES

## CANDINO

SAVING HANDS

### CG-101B

M/O Goatskin Back Speedo Fabric With Binding.  
Available In All Sizes & Colors.  
Available In Sheepskin, Cowhide & Buffalo.



EN 388  
3122X



EN 388  
3122X

### CG-101

M/O Goatskin Back Trinda fabric With Binding.  
Available In All Sizes & Colors.  
Available In Sheepskin, Cowhide & Buffalo.



[www.candinogroup.com](http://www.candinogroup.com)



EN 388  
3122X



**CG-102**  
M/O Goatskin Back Trinda Fabric With Binding.  
Available In All Sizes & Colors.  
Available In Sheepskin, Cowhide & Buffalo.

EN 388  
3122X



**CG-103**  
M/O Goatskin Back Trinda Fabric With Binding.  
Available In All Sizes & Colors.  
Available In Sheepskin, Cowhide & Buffalo.

EN 388  
3122X



**CG-103B**  
M/O Goatskin Back Trinda Fabric, Reflector On  
Knuckle & Tips With Binding. Available In All Sizes & Colors.  
Available In Sheepskin, Cowhide & Buffalo.

EN 388  
3122X



**CG-104**  
M/O Goatskin Back Trinda Fabric With Binding.  
Available In All Sizes & Colors.  
Available In Sheepskin, Cowhide & Buffalo.

# ASSEMBLY GLOVES

## CANDINO

SAVING HANDS

# WORKING GLOVES



**CG-105**

M/O Goatskin Back Interlock Fabric.  
Available In All Sizes & Colors.  
Available In Sheepskin, Cowhide & Buffalo.



**CG-106**

M/O Goatskin Back Interlock Fabric.  
Available In All Sizes & Colors.  
Available In Sheepskin, Cowhide & Buffalo.





# LOVER



3122X

### CG-107

M/O Goatskin Back Interlock Fabric With Binding

Available In All Sizes & Colors.

Available In Sheepskin, Cowhide & Buffalo.



3122X

### CG-107B

M/O Goatskin Back Interlock Fabric

With Binding On Palm Only.

Available In All Sizes & Colors.

Available In Sheepskin, Cowhide & Buffalo.



3122X

### CG-107C

M/O Goatskin Back Mesh Fabric &

Reflector On Knuckle With Binding.

Available In All Sizes & Colors.

Available In Sheepskin, Cowhide & Buffalo.



# ASSEMBLY GLOVES

# CANDINO

## SAVING LIVES

# WORKING GLOVES

EN 388



3122X



### CG-108W

M/O Goatskin Back Interlock Fabric  
Inside Full Fleece Lining.  
Available In All Sizes & Colors.  
Available In Sheepskin, Cowhide & Buffalo.

EN 388



3122X



### CG-108WB

M/O Goatskin Back Interlock Fabric Inside  
Full Fleece Lining.  
Available In All Sizes & Colors.  
Available In Sheepskin, Cowhide & Buffalo.



### CG-109W

M/O Goatskin Back Interlock Fabric With  
Binding Inside Full Fleece Lining.  
Available In All Sizes & Colors.  
Available In Sheepskin, Cowhide & Buffalo.





LOVESG



**CG-110**  
M/O Goatskin Back Interlock Fabric With Binding.  
Available In All Sizes & Colors.  
Available In Sheepskin, Cowhide & Buffalo.



**CG-111**  
M/O Goatskin Back Rib Fabric With Canvas Cuff & Binding.  
Available In All Sizes & Colors.  
Available In Sheepskin, Cowhide & Buffalo.



**CG-112**  
M/O Goatskin Back Interlock With Knitted Cuff.  
Available In All Sizes & Colors.  
Available In Sheepskin, Cowhide & Buffalo.



**CG-113B**  
M/O Goatskin Back Interlock Fabric With Knitted Cuff.  
Available In All Sizes & Colors.  
Available In Sheepskin, Cowhide & Buffalo.



# ASSEMBLY GLOVES

SAVING HAN

# WORKING G

EN 388  
3122X

## CG-114

M/O Goatskin Back Rib Fabric With  
Elastic Velcro Closure & Binding.  
Available In All Sizes & Colors.  
Available In Sheepskin, Cowhide & Buffalo.



EN 388  
3122X

## CG-115

M/O Goatskin Back Rib Fabric With Elastic  
Velcro Closure & Binding.  
Available In All Sizes & Colors.  
Available In Sheepskin, Cowhide & Buffalo.





LOVES



**CG-115B**  
M/O Goatskin Back Rib Fabric  
With Elastic Velcro Closure & Binding.  
Available In All Sizes & Colors.  
Available In Sheepskin, Cowhide & Buffalo



**CG-116**  
M/O Goatskin Back Rib Fabric With Elastic  
Velcro Closure & Binding.  
Available In All Sizes & Colors.  
Available In Sheepskin, Cowhide & Buffalo.



**CG-117**  
M/O Goatskin Back Rib Fabric With Elastic  
Velcro Closure & Binding.  
Available In All Sizes & Colors.  
Available In Sheepskin, Cowhide & Buffalo.



**CG-118**  
M/O Goatskin Back Fourway Fabric With Elastic  
Velcro Closure & Binding.  
Available In All Sizes & Colors.  
Available In Sheepskin, Cowhide & Buffalo.

ASSEMBLY GLOVES

# ASSEMBLY GLOVES

# WORKING GLOVES

EN 388  
3122X



## CG-119

M/O Goatskin Back Trinda Fabric With Elastic Velcro Closure & Binding.  
Available In All Sizes & Colors.  
Available In Sheepskin, Cowhide & Buffalo.

EN 388  
3122X



## CG-120W

M/O Goatskin Back Trinda Fabric With Elastic Velcro Closure & Binding Inside Full Fleece Lining.  
Available In All Sizes & Colors.  
Available In Sheepskin, Cowhide & Buffalo.



## CG-121

M/O Goatskin Back Fourway Fabric With Neoprene Cuff, Velcro Closure & Binding.  
Available In All Sizes & Colors.  
Available In Sheepskin, Cowhide & Buffalo.



## CG-122

M/O Goatskin Back Fourway Fabric With Elastic Velcro Closure & Binding.  
Available In All Sizes & Colors.  
Available In Sheepskin, Cowhide & Buffalo.



## CG-123

M/O Goatskin With Split Leather Palm Back Fourway Fabric With Elastic, Velcro Closure & Binding.  
Available In All Sizes & Colors.  
Available In Sheepskin, Cowhide & Buffalo.





LOVE



**CG-124**

M/O Goatskin Back Fourway Fabric With Binding.  
Available In All Sizes & Colors.  
Available In Sheepskin, Cowhide & Buffalo.



**CG-125W**

NM/O Goatskin Back Fourway With Binding  
Inside Full Fleece Lining.  
Available In All Sizes & Colors.  
Available In Sheepskin, Cowhide & Buffalo.



**CG-126**

M/O Goatskin Back Interlock Fabric.  
Available In All Sizes & Colors.  
Available In Sheepskin, Cowhide & Buffalo.



**CG-127**

M/O Goatskin Back Interlock Fabric With  
Jeans Cuff.  
Available In All Sizes & Colors.  
Available In Sheepskin, Cowhide & Buffalo.

# DRIVER GLOVES

SAVING HANDS

# WORKING



**CG-201**

M/O Goatskin With Binding.  
Available In All Sizes & Colors.  
Available In Sheepskin, Cowhide & Buffalo.



**CG-202**

M/O Goatskin.  
Available In All Sizes & Colors.  
Available In Sheepskin, Cowhide & Buffalo.



**CG-203W**

M/O Goatskin With Binding & Full Fleece Lining.  
Available In All Sizes & Colors.  
Available In Sheepskin, Cowhide & Buffalo.





# LOVES



### CG-204

AM/O Goatskin with Binding.  
Available In All Sizes & Colors.  
Available In Sheepskin, Cowhide & Buffalo.



### CG-205

M/O Goatskin With Binding.  
Available In All Sizes & Colors.  
Available In Sheepskin, Cowhide & Buffalo.



### CG-206

M/O Goatskin With Fourchettes.  
Available In All Sizes & Colors.  
Available In Sheepskin, Cowhide & Buffalo.



### CG-207

M/O Goatskin.  
Available In All Sizes & Colors.  
Available In Sheepskin, Cowhide & Buffalo.



### CG-208

M/O Goatskin With Knitted Cuff.  
Available In All Sizes & Colors.  
Available In Sheepskin, Cowhide & Buffalo.



### CG-209

M/O Goatskin With Knitted Cuff.  
Available In All Sizes & Colors.  
Available In Sheepskin, Cowhide & Buffalo.

# DRIVER GLOVES

# CANDINO

SAVING HANDS

# WORKING GLOVES



## CG-210

M/O Goatskin With Binding.  
Available In All Sizes & Colors.  
Available In Sheepskin, Cowhide & Buffalo.



## CG-210B

M/O Goatskin With Binding.  
Available In All Sizes & Colors.  
Available In Sheepskin, Cowhide & Buffalo.



## CG-210C

M/O Goatskin Back Fabric Tips With Binding.  
Available In All Sizes & Colors.  
Available In Sheepskin, Cowhide & Buffalo.



## CG-210D

M/O Yellow Goatskin With Binding.  
Available In All Sizes & Colors.  
Available In Sheepskin,  
Cowhide & Buffalo.



## CG-210E

M/O Yellow Cowhide With Binding.  
Available In All Sizes & Colors.  
Available In Sheepskin,  
Cowhide & Buffalo.



## CG-211

M/O Beige Goatskin With Binding.  
Available In All Sizes & Colors.  
Available In Sheepskin, Cowhide & Buffalo.



## CG-212W

M/O Goatskin With Binding, Inside  
Full Fleece Lining.  
Available In All Sizes & Colors.  
Available In Sheepskin, Cowhide & Buffalo.



## CG-213W

M/O Light Beige Goatskin With Binding,  
Inside Full Fleece Binding.  
Available In All Sizes & Colors.  
Available In Sheepskin, Cowhide & Buffalo.





# LOVEG

EN 388  
3122X



**CG-214W**  
M/O Black Goatskin With Binding & Velcro Closure  
Inside Full Fleece Lining.  
Available In All Sizes & Colors.  
Available In Sheepskin, Cowhide & Buffalo.



**CG-215**  
M/O Goatskin With Leather Patch On Knitted Cuff.  
Available In All Sizes & Colors.  
Available In Sheepskin, Cowhide & Buffalo.



**CG-216**  
M/O Goatskin With Split Leather Palm.  
Available In All Sizes & Colors.  
Available In Sheepskin, Cowhide & Buffalo.



**CG-217**  
M/O Goatskin With Fourchettes & Binding.  
Available In All Sizes & Colors.  
Available In Sheepskin, Cowhide & Buffalo.

# CANADIAN GLOVES

SAVING HANDS

# WORKING GLOVES



## CG-301

M/O Goatskin Back Jeans Fabric With Rubberized Cuff & Binding Inside Half Lining.  
Available In All Sizes & Colors.  
Available In Sheepskin, Cowhide & Buffalo.



## CG-302

M/O Goatskin Back Mesh Fabric With Reflector On Knuckle, Rubberized Cuff & Binding.  
Available In All Sizes & Colors.  
Available In Sheepskin, Cowhide & Buffalo.



## CG-303

M/O Goatskin Back Jeans Fabric With Rubberized Cuff & Binding Inside Half Lining.  
Available In All Sizes & Colors.  
Available In Sheepskin, Cowhide & Buffalo.



## CG-304

M/O Goatskin Back Jeans With Cuff & Binding Inside Half Lining.  
Available In All Sizes & Colors.  
Available In Sheepskin, Cowhide & Buffalo.





EN 388  
3122X



**CG-305W**

M/O Goatskin Back Jeans With Rubberized Cuff & Binding Inside Full Fleece Lining.  
Available In All Sizes & Colors.  
Available In Sheepskin, Cowhide & Buffalo.

EN 388  
3122X



**CG-306W**

M/O Goatskin Back Trinda Fabric With Cuff Reflector On Knuckle & Binding Inside Full Fleece Lining.  
Available In All Sizes & Colors.  
Available In Sheepskin, Cowhide & Buffalo.

EN 388  
3122X



**CG-307W**

M/O Goatskin Back Mesh Fabric With Reflector On Knuckle Rubberized Cuff & Binding Inside Full Fleece Lining.  
Available In All Sizes & Colors.  
Available In Sheepskin, Cowhide & Buffalo.



**CG-309W**

M/O Goatskin Back Oxpert Fabric With Knitted Cuff Inside Full Fleece Lining.  
Available In All Sizes & Colors.  
Available In Sheepskin, Cowhide & Buffalo.



**CG-308W**

M/O Goatskin Back & Cuff In Jeans Fabric With Binding Inside Fur Lining.  
Available In All Sizes & Colors.  
Available In Sheepskin, Cowhide & Buffalo.

# WELDING GLOVES



412X4X  
BS EN 12477:2001+  
A1:2005 A&B

## CG-401

M/O Goatskin With 13cm Split Leather Cuff & Kevlar Thread Stitching.  
Available In All Sizes & Colors.  
Available In Sheepskin, Cowhide & Buffalo.



412X4X  
BS EN 12477:2001+  
A1:2005 A&B



412X4X  
BS EN 12477:2001+  
A1:2005 A&B

## CG-402

M/O Goatskin With 13cm Split Leather Cuff & Kevlar Thread Stitching.  
Available In All Sizes & Colors.  
Available In Sheepskin, Cowhide & Buffalo.  
Available In Different Cuff Sizes

## CG-403

M/O Goatskin With 13cm Split Leather Cuff, Kevlar Thread Stitching & Binding.  
Available In All Sizes & Colors.  
Available In Sheepskin, Cowhide & Buffalo.  
Available In Different Cuff Sizes.





EN 388



3122X

EN 407



412X4X

BS EN 12477:2001+  
A1:2005 A&B



### CG-404

M/O Goatskin With 13cm Split Leather Cuff & Kevlar Thread Stitching.  
Available In All Sizes & Colors.  
Available In Sheepskin, Cowhide & Buffalo.  
Available In Different Cuff Sizes

EN 388



3122X

EN 407



412X4X

BS EN 12477:2001+  
A1:2005 A&B



### CG-405

M/O Goatskin With 15cm Split Leather Cuff, Kevlar Thread Stitching & Binding.  
Available In All Sizes & Colors.  
Available In Sheepskin, Cowhide & Buffalo.  
Available In Different Cuff Sizes



### CG-405B

M/O Goatskin With 15cm Split Leather Cuff & Kevlar Thread Stitching.  
Available In All Sizes & Colors.  
Available In Sheepskin, Cowhide & Buffalo.  
Available In Different Cuff Sizes



### CG-406

M/O Goatskin Back Split Leather With Rubberized Jeans Cuff, Kevlar Thread Stitching & Binding.  
Available In All Sizes & Colors.  
Available In Sheepskin, Cowhide & Buffalo.



### CG-407

M/O Goatskin Back & 13cm Cuff In Split Leather With Kevlar Thread Stitching & Binding.  
Available In All Sizes & Colors.  
Available In Sheepskin, Cowhide & Buffalo.  
Available In Different Cuff Sizes



3122X



412X4X

BS EN 12477:2001+  
A1:2005 A&B



# BASIC SYNTHETIC GLOVES



## CG-501

M/O Synthetic Leather Back Trinda Fabric With Binding.  
Available In All Sizes & Colors.  
Available In Natural Leather



## CG-502

M/O Synthetic Leather Back Trinda Fabric With Binding.  
Available In All Sizes & Colors.  
Available In Natural Leather



## CG-503

M/O Synthetic Leather Back Trinda Fabric  
With Mesh Fabric Fourchettes & Binding.  
Available In All Sizes & Colors.  
Available In Natural Leather



## CG-504

M/O Synthetic Leather With Touch Friendly  
Material Tips Back Trinda Fabric & Binding.  
Available In All Sizes & Colors.  
Available In Natural Leather



## CG-505

M/O Synthetic Leather Back Trinda Fabric  
With Elastic Velcro Closure & Binding.  
Available In All Sizes & Colors.  
Available In Natural Leather



## CG-506W

M/O Synthetic Leather Back Mesh Fabric With  
Rubberized Cuff, Reflector On Knuckle & Binding  
Inside Micro Fleece Lining, 40 Gram Thinsulate™  
Lining With Wind Proof & Breathable Water-Membrane.  
Available In All Sizes & Colors.  
Available In Natural Leather



# MECHANIC LEATHER GLOVES



## CG-601W

M/O Goatskin Back Fourway Fabric With PU Binding Inside Micro Fleece Lining 40 Gram Thinsulate™ Lining With Wind Proof & Breathable Water-Membrane.  
Available In All Sizes & Colors.  
Available In Sheepskin, Cowhide & Buffalo.



## CG-602

M/O Goatskin Back Fourway Fabric, Neoprene On Knuckle & Cuff With Velcro Closure & PU Binding.  
Available In All Sizes & Colors.  
Available In Sheepskin, Cowhide & Buffalo.

# MECHANIC LEATHER GLOVES



## CG-603W

M/O Black Goatskin Back Fourway Fabric With Reflector Piping  
Neoprene Cuff & PU Binding Inside Micro Fleece Lining & 100 Gram Thinsulate™ Lining.  
Available In All Sizes & Colors.  
Available In Sheepskin, Cowhide & Buffalo.

## CG-604W

M/O Goatskin With Silicone Printed Synthetic Leather Tips for Grip  
Back Fourway Fabric & Reflector Piping With Knitted Cuff Inside  
Polar Fleece Lining With 40 Gram Thinsulate™ Lining.  
Available In All Sizes & Colors.  
Available In Sheepskin, Cowhide & Buffalo.



## CG-605W

M/O Goatskin With Silicon Printed Synthetic  
Leather Tips for Grip Back Reflective Piping  
With Knitted Cuff Inside Polar Fleece Lining  
with 40 Gram Thinsulate™ Lining.  
Available In All Sizes & Colors.  
Available In Sheepskin, Cowhide & Buffalo.

## CG-606W

M/O Goatskin Back & Cuff in Soft-Shell Inside  
Micro Fleece Lining, 150 Gram Thinsulate™  
Lining With Wind Proof & Breathable Water-  
Membrane & Fur Lining Inside The Cuff.  
Available In All Sizes & Colors.  
Available In Sheepskin, Cowhide & Buffalo.

## CG-607W

M/O Goatskin Back & cuff in Soft-Shell Fabric  
With PU Binding Inside Removable For Lining.  
Available In All Sizes & Colors.  
Available In Sheepskin, Cowhide & Buffalo.





# MECHANIC LEATHER GLOVES



**CG-608**  
 M/O Goatskin Back Fourway Fabric With Binding.  
 Available In All Sizes & Colors.  
 Available In Sheepskin, Cowhide & Buffalo.



**CG-609**  
 M/O Yellow Goatskin Back Fourway Fabric &  
 Neoprene Knuckle With TPR Closure.  
 Available In All Sizes & Colors.  
 Available In Sheepskin, Cowhide & Buffalo.



**CG-610W**  
 M/O Goatskin Back Fourway Fabric Reflector  
 Piping Mesh Fabric Between Fingers With Knitted  
 Cuff Inside Full Fleece Lining.  
 Available In All Sizes & Colors.  
 Available In Sheepskin, Cowhide & Buffalo.



**CG-611W**  
 M/O Goatskin Back & Between Fingers Speedo  
 Fabric With Reflector Piping, Elastic & TPR Velcro  
 Closure Inside Full Fleece Lining.  
 Available In All Sizes & Colors.  
 Available In Sheepskin, Cowhide & Buffalo.



**CG-612W**  
 M/O Goatskin Back Fourway Fabric With  
 Reflector Piping & PU Binding Inside Micro  
 Fleece Lining 40 Gram Thinsulate™ Lining With Wind Proof  
 & Breathable Water-Membrane.  
 Available In All Sizes & Colors.  
 Available In Sheepskin, Cowhide & Buffalo.

# GENERAL PURPOSE GLOVES



## CG-701

M/O Synthetic Leather (Double Palm) Back Fourway Fabric With Neoprene Cuff & Velcro Closure & Binding.  
Available In All Sizes & Colors.  
Available In Natural Leather



## CG-702W

M/O Water-Resistant Synthetic Fabric With Synthetic Leather On Palm & PU Binding Inside  
Wind Proof & Breathable Water-Membrane With Micro Fleece Lining.  
Available In All Sizes & Colors.  
Available In Natural Leather





# GENERAL PURPOSE GLOVES



**CG-703**

M/O Synthetic Leather Back Fourway Fabric  
With Elastic & TPR Velcro Closure.  
Available In All Sizes & Colors.  
Available In Natural Leather



**CG-704**

M/O Digital Suede Back Mesh Fourway Fabric  
With Silicone Printing, Mesh Fabric Between Fingers,  
PU Piping & Knitted cuff.  
Available In All Sizes & Colors.  
Available In Natural Leather



**CG-705**

M/O Synthetic Leather Back Fourway Fabric, Neoprene On  
Knuckle & Cuff with TPR Closure & PU Binding.  
Available In All Sizes & Colors.  
Available In Natural Leather



**CG-706**

M/O Digital Suede Back Speedo Fabric  
With Lycra Between Fingers & Binding.  
Available In All Sizes & Colors

# GENERAL PURPOSE GLOVES



## CG-707

M/O Synthetic Leather Back Polar Fleece With Elastic & TPR Velcro Closure.  
Available In All Sizes & Colors.  
Available In Natural Leather



## CG-708

M/O Synthetic Leather Back Fourway Fabric With Lycra Between Fingers, Neoprene Cuff & TPR Velcro Closure.  
Available In All Sizes & Colors.  
Available In Natural Leather



## CG-709

M/O Synthetic Leather With Gel Padded Palm Back Fourway Fabric & Binding.  
Available In All Sizes & Colors.  
Available In Natural Leather



## CG-710

M/O Synthetic Leather (Double Palm) Back Fourway Fabric With Elastic & TPR Velcro Closure.  
Available In All Sizes & Colors.  
Available In Natural Leather





# GENERAL PURPOSE GLOVES



## CG-711

M/O Digital Suede Back Fourway Fabric  
With Silicone Printing, Elastic & TPR Velcro Closure.  
Available In All Sizes & Colors.  
Available In Natural Leather



## CG-712

M/O Synthetic Leather With PU On Palm Back  
Fourway Fabric With Neoprene Cuff & TPR Velcro Closure.  
Available In All Sizes & Colors.  
Available In Natural Leather



## CG-713

M/O Synthetic Leather With PVC Grip On Palm Back  
Fourway Fabric With Synthetic Leather Elastic &  
TPR Velcro Closure.  
Available In All Sizes & Colors.  
Available In Natural Leather



## CG-714

M/O Synthetic Leather (Double Palm) Back Fourway  
Fabric With Elastic & TPR Velcro Closure.  
Available In All Sizes & Colors.  
Available In Natural Leather

# GRIPPER GLOVES



## CG-801

M/O Synthetic Leather With Silicone Printing on Palm Back Fourway Fabric With Neoprene Cuff & TPR Velcro Closure & Binding.  
Available In All Sizes & Colors.  
Available In Natural Leather.



## CG-802W

M/O Synthetic Leather with PVC Grip Palm Back Fourway Fabric, Reflector Piping With Neoprene Cuff & PU Binding Inside Micro Fleece Lining 40 Gram Thinsulate™ Lining With Wind Proof & Breathable Water-Membrane.  
Available In All Sizes & Colors.  
Available In Natural Leather.



## CG-803W

M/O Softshell Fabric With PVC Grip On Palm, Synthetic Leather Between Fingers, Neoprene Cuff & PU Binding Inside Micro Fleece Lining With 40 Gram Thinsulate™ Lining.  
Available In All Sizes & Colors.  
Available In Natural Leather.





# GRIPPER GLOVES



## CG-804

M/O Synthetic Leather With Silicone Printing On Palm Back & Cuff In Neoprene With TPR Velcro Closure & PU Binding.  
Available In All Sizes & Colors.  
Available In Natural Leather.



## CG-805W

M/O Synthetic Leather With PVC Grip On Palm Back Fourway Fabric, Neoprene On Knuckle & Cuff With TPR Velcro Closure & Binding Inside Micro Fleece Lining With Wind Proof & Breathable Water-Membrane.  
Available In All Sizes & Colors.  
Available In Natural Leather.



## CG-806

M/O Synthetic Leather With Silicone Printing On Palm Back Fourway Fabric With Neoprene Cuff, TPR Velcro Closure & PU Binding.  
Available In All Sizes & Colors.  
Available In Natural Leather.



## CG-807

M/O Synthetic Leather With Kevlar Grip On Palm Back Fourway Fabric, Neoprene On Knuckle & Cuff With TPR Velcro Closure & PU Binding.  
Available In All Sizes & Colors.  
Available In Natural Leather.



## CG-808

M/O Synthetic Leather With PVC Grip On Palm Back Fourway Fabric With Fabric Piping, TPR Velcro Closure & PU Binding.  
Available In All Sizes & Colors.  
Available In Natural Leather.



# IMPACT PROTECTION GLOVES



## CG-901

M/O Synthetic Leather With Silicone Printing  
On Gel Padded Palm Back Injected & Stitched  
TPR Protection With Neoprene Cuff.  
Available In All Sizes & Colors.



## CG-902

M/O Synthetic Leather With PVC Grip on Palm Back Stitched  
TPR & Rubber Protection With Elastic & TPR Velcro Closure.  
Available In All Sizes & Colors.





# IMPACT PROTECTION GLOVES



## CG-903

M/O Synthetic Leather With Silicone Printing On Palm Back Injected & Stitched TPR Protection With Neoprene Cuff  
Available In All Sizes & Colors.



## CG-904

M/O Synthetic Leather With Extra Silicone Printed Synthetic Leather Patched Back Fourway Fabric With Stitched TPR Protection  
Rubberized Reflector On Knuckle & Neoprene Cuff.



## CG-905

M/O Synthetic Leather Back Fourway Fabric With Injected TPR Protection Magnet For Holding Tools & Neoprene Cuff With Velcro Closure.  
Available In All Sizes & Colors.



## CG-906

M/O Goatskin With PVC Grip On Palm Back Stitched TPR Protection & Binding.  
Available In All Sizes & Colors.  
Available In Cowhide & Buffalo.



## CG-907

M/O Black Goatskin Back Fourway Fabric With Stitched TPR Fingers & Carbon Knuckle Protection, Elastic & TPR Velcro Closure.  
Available In All Sizes & Colors.



# PU LEATHER GLOVES

PU LEATHER



## CG-1001W

M/O Digital PU With Gel Padded Palm Back Fourway Fabric Reflector Piping With Neoprene Cuff & PU Binding Inside Micro Fleece Lining With Windproof & Breathable Water-Membrane. Available In All Sizes & Colors.



## CG-1002W

M/O Digital PU Back Fourway Fabric With Reflector Piping Mesh Fabric Between Fingers & Knitted Cuff Inside Micro Fleece Lining With Wind Proof & Breathable Water-Membrane. Available In All Sizes & Colors.



## CG-1003W

M/O Digital PU Back Fourway Fabric With Reflector Piping, Mesh Fabric Between Fingers, Neoprene Cuff & Binding Inside Micro Fleece Lining With 40 Gram Thinsulate™ Lining. Available In All Sizes & Colors.



## CG-1004W

M/O Digital PU Back Fourway Fabric With Reflector Piping, Mesh Fabric Between Fingers, Rubberized Jeans Fabric Cuff & PU Binding Inside Micro Fleece Lining. Available In All Sizes & Colors.







# GLOVES



### CG-1005

M/O Digital PU Back Fourway Fabric, Reflector Piping With Lycra Between Fingers & PU Binding. Available In All Sizes & Colors.



### CG-1006

M/O Digital PU Back Fourway Fabric With Mesh Fabric Between Fingers & PU Binding. Available In All Sizes & Colors.



### CG-1007

M/O Digital PU With Thin Gel Padded Palm Back Fourway Fabric, Mesh Fabric Between Fingers Reflector Piping With PU Binding. Available In All Sizes & Colors.



### CG-1008

M/O Digital PU Back Fourway Fabric With Reflector Piping, Mesh Fabric Between Fingers Elastic On Back & PU Leather Velcro Strap. Available In All Sizes & Colors.



### CG-1009

M/O Plain PU Back Fourway Fabric With Reflector Piping Elastic & PU Leather Velcro Closure. Available In All Sizes & Colors.



# CUT RESISTENT GLOVES



CANDINO  
SAVING HANDS



## CG-1101

M/O Goatskin With PVC Grip On Palm Back Stitched TPR  
Protection Binding & Kevlar Thread Stitching  
Inside Cut Level 3 Kevlar Lining.  
Available In All Sizes & Colors.



[www.candinogroup.com](http://www.candinogroup.com)





**CG-1102**

M/O Synthetic Leather With PVC Grip On Palm Back  
 Stitched TPR & Rubber Protection With Neoprene  
 Cuff Inside Cut Level 3 Kevlar Lining.  
 Available In All Sizes & Colors.



**CG-1103**

M/O Goatskin Back Trinda Fabric With Kevlar Thread  
 Stitching Inside Cut Level 2 Kevlar Lining & Binding.  
 Available In All Sizes & Colors.



**CG-1104**

M/O Goatskin Back Rib Fabric With Kevlar Thread  
 Stitching & Binding Inside Cut Level 3 Kevlar Lining.  
 Available In All Sizes & Colors.



**CG-1105**

M/O Synthetic Leather Back With Stitched TPR &  
 Carbon Knuckle Protection, Neoprene Cuff & PU  
 Binding Inside Cut Level 3 Kevlar Lining.



# CANDINO

## GROUP OF INDUSTRIES

Address:



Defence Road, Opp. Mosque Iqbal Town,  
Sialkot - 51310, Pakistan

Tel: & Fax:



+92 52 3553942, 3553943  
+92 52 3553940

E-mail: & Web:



[candino@candinogroup.com](mailto:candino@candinogroup.com)  
[www.candinogroup.com](http://www.candinogroup.com)

